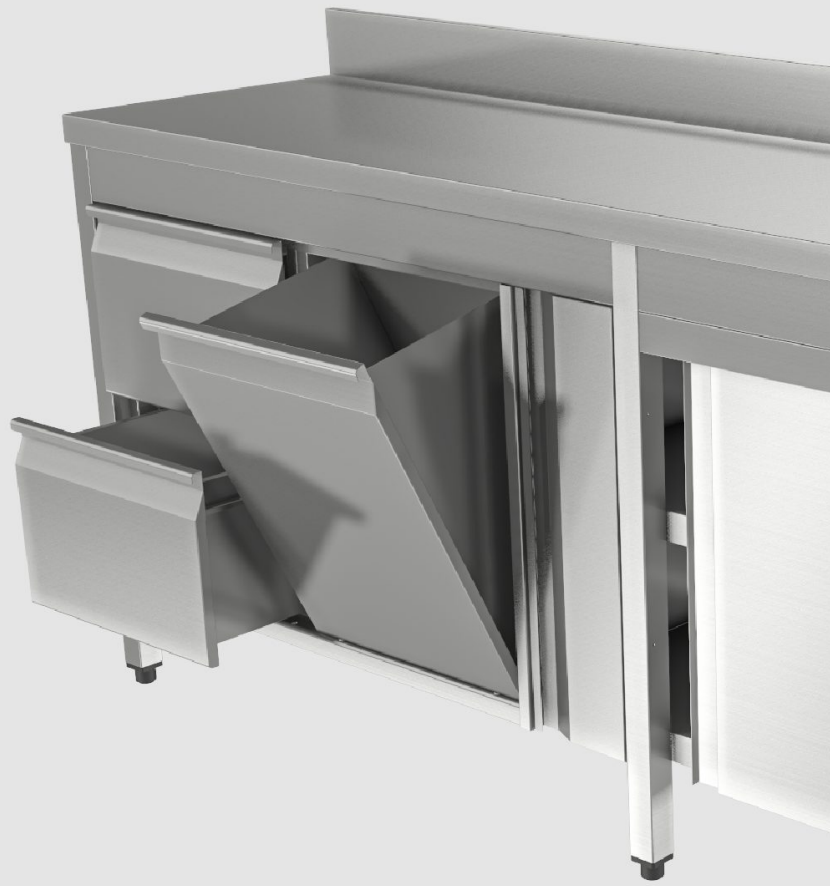
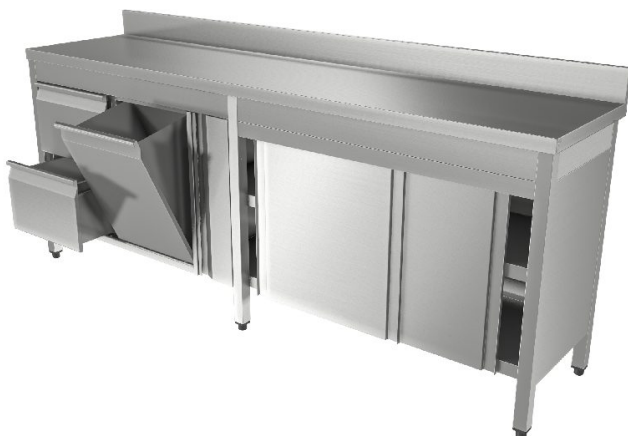


Workbench



Workbench



Workbenches are specially developed to address different needs and applications within the CSSD (i.e., reception, washing, preparation and packing) or other areas of the Hospital.

Easily adaptable to the needs of customers, with several available configurations, such as: trays, drawer system, front and side closing, lower and middle shelves and sliding door.

Main Characteristics

- Made in stainless steel AISI 304.
- Flat and soundproofed top.
- Tubular structure with argon welded as support.
- Easy customization of the modules to the customer's request.
- All modules can be configured and manufactured with different dimensions.
- Strong and solid range of tables but still easy to assemble and transport.

Measures according to customer request.

Options

- Fix or removable structures.
- Corner top.
- Drawer system.
- Side or front closing.
- Lower and middle shelves.
- Module configuration according to customer's needs.

Modules

- Modules and drawer system made in stainless steel AISI 304 to be used in hospital and laboratory environment.
- Rails in stainless steel to guide the drawer. Drawer with integrated handle in stainless steel.
- Drawer can be provided with lock and key.
- Modular construction for easy installation.



Due to product improvement and development, PROHS reserves the right to make changes without notice.

